

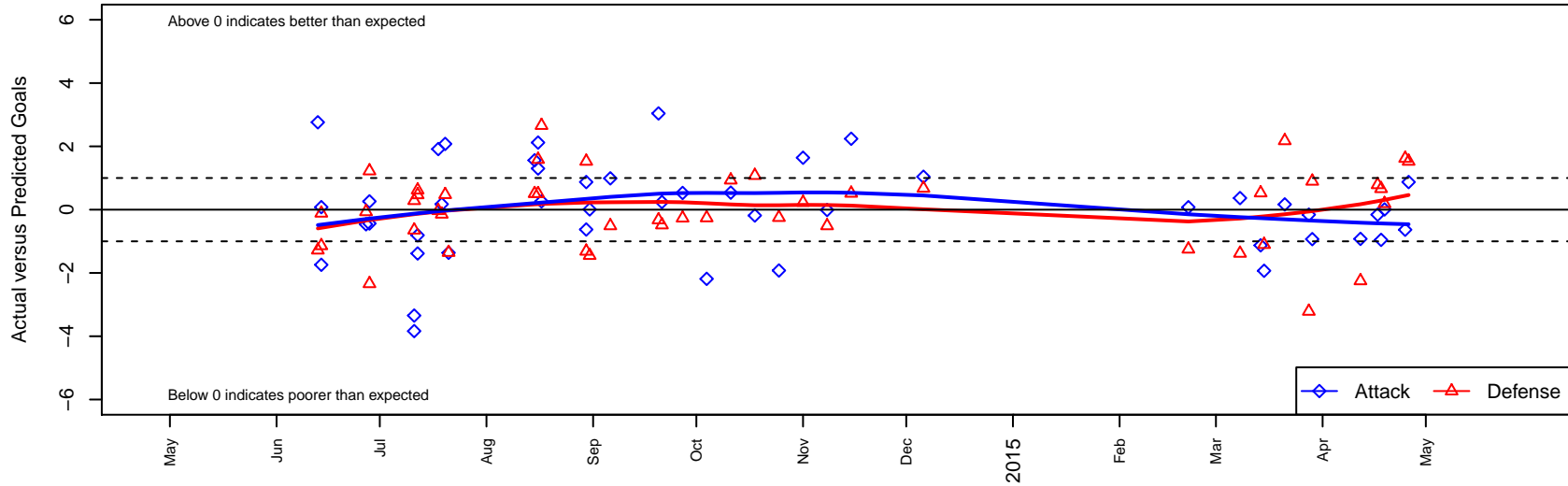
Kent United White B01

Kent United
 Kent, WA
 B01 total strength=902
 attack=1.64 defense=1.24
 fall league = PSPL Classic 2 U13
 spr league = Spr PSPL SuperLeague 2 U13

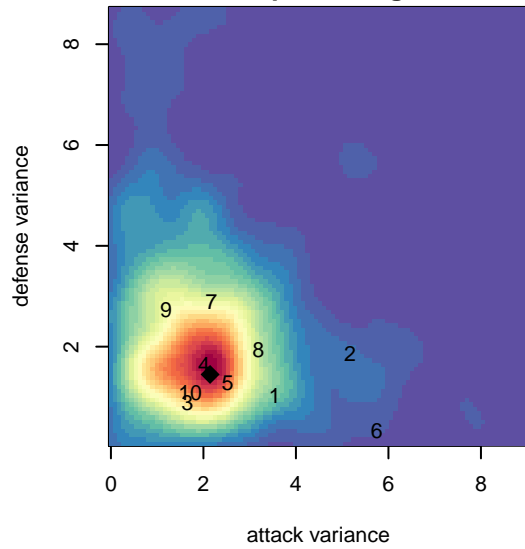
alt names used:
 KENT UNITED B01 WHITE (WA)
 Kent United B01 White
 KENT UNITED LOPEZ WHITE (WA)
 Kent United BU13 White
 Kent United White
 Kent United White
 Kent United 01 White
 Kent United BU13 White
 KYSA KENT UNITED KENT UNITED B01 WHI

Venues played:
 2014 Starfire Spring Classic BU13
 2014 RVS Classic BU13
 2014 Kent Cornucopia Cup U13 Gold U13
 2014 Nike Crossfire Challenge Bronze U13
 2014 Mt Hood Challenge U13
 2014 Starfire Labor Day Cup U13
 2014 PSPL Classic 2 U13
 2014 Spr PSPL SuperLeague 2 U13
 2014 WA Cup BU13 Gold/Platinum U13

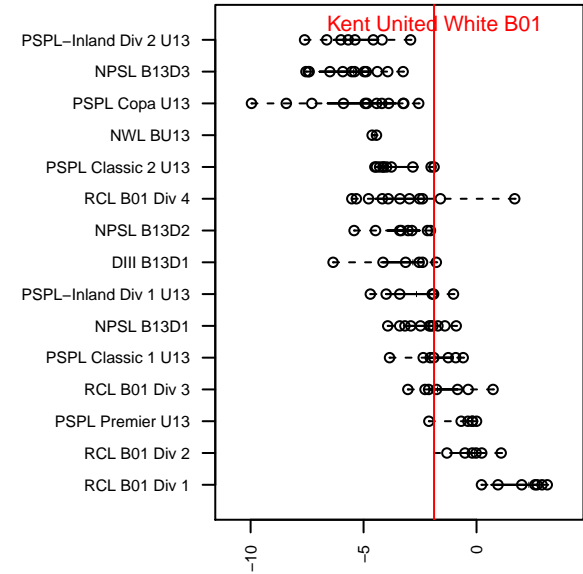
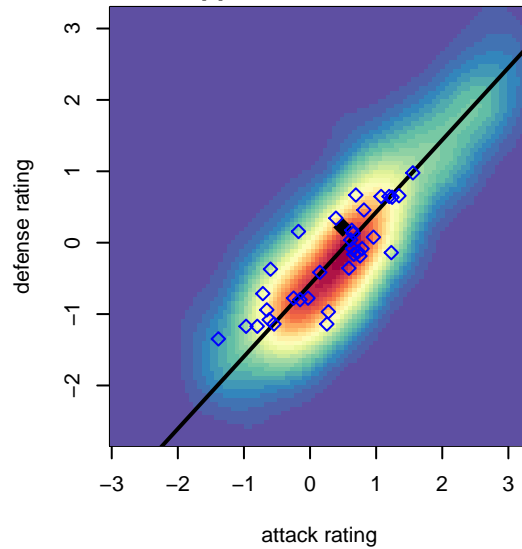
Kent United White B01
 Dots are actual minus expected GF (blue circles) and GA (red triangles).
 Blue line is smoothed change in attack strength. Red is smoothed change in defense strength.



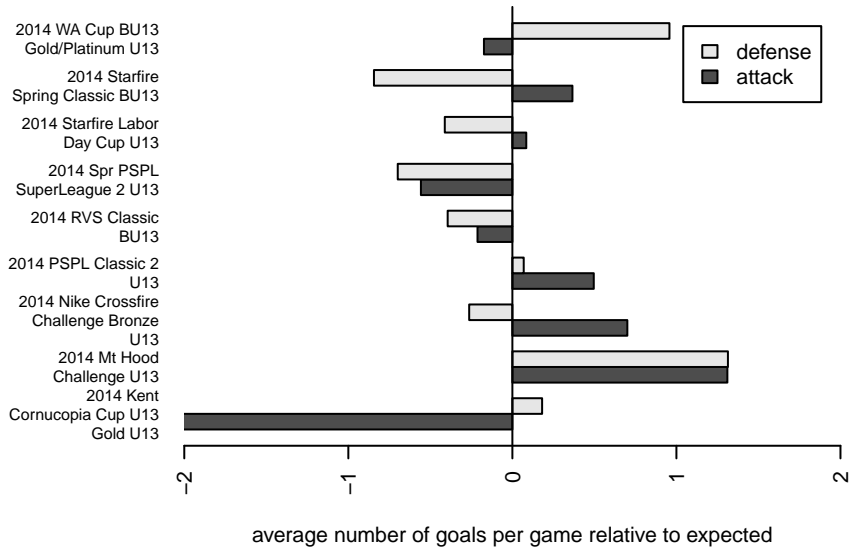
**attack and defense variance (black dot)
relative to other teams
and top 10 in region**



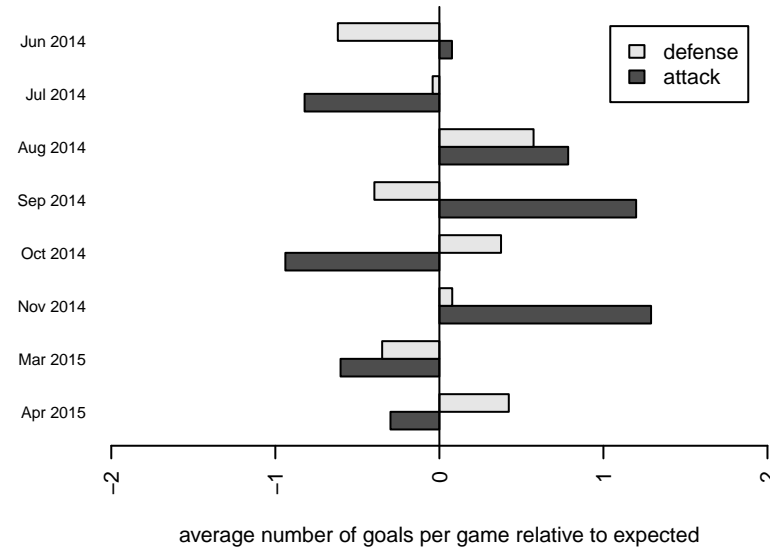
**attack and defense rating
relative to others at age
and all opponents in last 13 months**



Performance relative to 13 month average



Performance relative to 13 month average



date	home		away		venue	pred.home	pred.away
2015-04-26	Kent United White B01	3	FC Tacoma Blue B01	0	2014 WA Cup BU13 Gold/Platinum U13	2.13	1.53
2015-04-25	Kent United White B01	1	MVP Rapids Navy B01	0	2014 WA Cup BU13 Gold/Platinum U13	1.63	1.62
2015-04-19	Kent United White B01	1	Central WA SA Grey B01	3	2014 WA Cup BU13 Gold/Platinum U13	0.99	3.19
2015-04-18	NW United Premier B01	2	Kent United White B01	0	2014 WA Cup BU13 Gold/Platinum U13	2.66	0.95
2015-04-17	Seattle Celtic Green B01	1	Kent United White B01	1	2014 WA Cup BU13 Gold/Platinum U13	1.79	1.16
2015-04-12	Kent United White B01	1	America FC B01	4	2014 Spr PSPL SuperLeague 2 U13	1.92	1.75
2015-03-29	Kent United White B01	1	Washington East SC B01	1	2014 Spr PSPL SuperLeague 2 U13	1.93	1.90
2015-03-28	Seattle Celtic Green B01	5	Kent United White B01	1	2014 Spr PSPL SuperLeague 2 U13	1.79	1.16
2015-03-21	Central WA SA Navy B01	0	Kent United White B01	2	2014 Spr PSPL SuperLeague 2 U13	2.18	1.83
2015-03-15	Washington East SC B01	3	Kent United White B01	0	2014 Spr PSPL SuperLeague 2 U13	1.90	1.93
2015-03-14	Kent United White B01	1	FC Tacoma Blue B01	1	2014 Spr PSPL SuperLeague 2 U13	2.13	1.53
2015-03-08	Kent United White B01	2	MVP Rapids Navy B01	3	2014 Spr PSPL SuperLeague 2 U13	1.63	1.62
2015-02-21	America FC B01	3	Kent United White B01	2	2014 Spr PSPL SuperLeague 2 U13	1.75	1.92
2014-12-06	Kent United White B01	5	Wenatchee Valley United B01	0	2014 PSPL Classic 2 U13	3.96	0.67
2014-11-15	Kent United White B01	5	KVJSA Ellensburg FC Chargers B01	0	2014 PSPL Classic 2 U13	2.76	0.52
2014-11-08	Kitsap Pumas 1 B01	1	Kent United White B01	3	2014 PSPL Classic 2 U13	0.49	3.01
2014-11-01	Kent United White B01	4	TC United B01	1	2014 PSPL Classic 2 U13	2.36	1.23
2014-10-25	America FC B01	2	Kent United White B01	0	2014 PSPL Classic 2 U13	1.75	1.92
2014-10-18	Kent United White B01	5	WPFC Fury Black B01	0	2014 PSPL Classic 2 U13	5.18	1.08
2014-10-11	Kent United White B01	4	NK Havoc B01	0	2014 PSPL Classic 2 U13	3.46	0.93
2014-10-04	Impact FC Black B01	1	Kent United White B01	1	2014 PSPL Classic 2 U13	0.74	3.19
2014-09-27	ISC Gunners B B01	1	Kent United White B01	4	2014 PSPL Classic 2 U13	0.73	3.47
2014-09-21	KVJSA Ellensburg FC Chargers B01	1	Kent United White B01	3	2014 PSPL Classic 2 U13	0.52	2.76
2014-09-20	Wenatchee Valley United B01	1	Kent United White B01	7	2014 PSPL Classic 2 U13	0.67	3.96
2014-09-06	Kent United White B01	4	Kitsap Pumas 1 B01	1	2014 PSPL Classic 2 U13	3.01	0.49
2014-08-31	Kent United White B01	1	NWN Red B01	4	2014 Starfire Labor Day Cup U13	0.99	2.55
2014-08-30	Fusion FC 2002B	5	Kent United White B01	0	2014 Starfire Labor Day Cup U13	3.68	0.63
2014-08-30	FC Tacoma Blue B01	0	Kent United White B01	3	2014 Starfire Labor Day Cup U13	1.53	2.13

date	home		away		venue	pred.home	pred.away
2014-08-17	Slammers Orange B01	0	Kent United White B01	2	2014 Mt Hood Challenge U13	2.66	1.74
2014-08-16	Kent United White B01	8	Theho Cosmos White B01	0	2014 Mt Hood Challenge U13	5.88	0.50
2014-08-16	Kent United White B01	4	Salem Liverpool B01	0	2014 Mt Hood Challenge U13	2.70	1.59
2014-08-15	Kent United White B01	6	Westside Timbers Copa TS B01	0	2014 Mt Hood Challenge U13	4.44	0.51
2014-07-21	FC Alliance B B01	3	Kent United White B01	0	2014 Nike Crossfire Challenge Bronze U13	1.65	1.36
2014-07-20	Crossfire Premier D B01	0	Kent United White B01	8	2014 Nike Crossfire Challenge Bronze U13	0.47	5.92
2014-07-19	Kent United White B01	2	WPFC Navy B01	1	2014 Nike Crossfire Challenge Bronze U13	1.83	0.86
2014-07-18	FC Spokane Black B01	2	Kent United White B01	4	2014 Nike Crossfire Challenge Bronze U13	1.97	2.08
2014-07-12	Kent United White B01	4	NWSC Islanders B01	0	2014 Kent Cornucopia Cup U13 Gold U13	5.38	0.47
2014-07-12	Kent United Green B01	1	Kent United White B01	1	2014 Kent Cornucopia Cup U13 Gold U13	1.62	1.81
2014-07-11	Kent United White B01	2	Snohomish United White B01	1	2014 Kent Cornucopia Cup U13 Gold U13	5.84	0.35
2014-07-11	Kent United Black B01	0	Kent United White B01	3	2014 Kent Cornucopia Cup U13 Gold U13	0.29	6.35
2014-06-28	Emerald City FC Green B01	0	Kent United White B01	1	2014 RVS Classic BU13	1.22	1.44
2014-06-28	Slammers Orange B01	5	Kent United White B01	2	2014 RVS Classic BU13	2.66	1.74
2014-06-27	Kent United White B01	3	NK Havoc B01	1	2014 RVS Classic BU13	3.46	0.93
2014-06-14	Fraser Valley Selects 2002B	3	Kent United White B01	1	2014 Starfire Spring Classic BU13	2.89	0.92
2014-06-14	South Tacoma United Blanco B01	3	Kent United White B01	0	2014 Starfire Spring Classic BU13	1.86	1.74
2014-06-13	Kent United White B01	4	TUSK United B01	3	2014 Starfire Spring Classic BU13	1.24	1.72